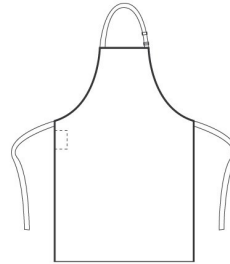


CARTON	PACK	NO. SKU'S
72	12	60



PR150 'COLOURS' BIB APRON



Colour	Pantone	C	M	Y	K	Colour	Pantone	C	M	Y	K
Apple	360	64	0	80	0	Marine Blue	281	100	85	5	35
Aqua	344	32	0	31	0	Mid Blue	2718	72	43	0	0
Aubergine	5115	53	91	21	72	Mocha	7505	17	44	59	51
Black	Black	0	0	0	100	Mustard	7405U	0	11	97	12
Black Denim	433	90	68	41	90	Mushroom	410U	22	38	27	62
Blue Denim	288	100	80	6	37	Natural	1205	0	5	31	0
Bottle	560	69	0	60	76	Navy	2766	100	87	0	34
Brown	476	30	72	74	84	Oasis Green	371	58	9	95	64
Burgundy	216c	0	83	34	47	Olive	378	48	11	98	70
Camel	132	9	40	100	36	Orange	1655	0	65	87	0
Charcoal	6U	100	79	44	93	Peacock	7477	86	28	21	65
Chestnut	7525	13	56	61	32	Pink	1895	0	30	6	0
Cornflower	279	68	34	0	0	Pistachio	578U	31	0	48	1
Cyan	Cyan c	100	0	0	0	Steel	7545	56	30	17	52
Dark Grey	431c	11	0	0	65	Purple	269	82	98	5	26
Duck Egg Blue	7466U	88	0	39	0	Raspberry Crush	234U	18	100	4	18
Emerald	341	100	0	69	30	Red	200	0	100	65	15
Fuchsia	219	1	92	1	0	Rich Violet	2587	60	71	0	0
Grey Denim	425	52	29	30	78	Royal	286	100	60	0	6
Hot Pink	214c	0	100	24	4	Sage	5497	40	9	21	32
Indigo Denim	2767	100	90	10	77	Salsa	187U	8	100	79	28
Kelly Green	355	94	0	100	0	Sapphire	300	99	51	0	0
Khaki	7503	0	12	35	25	Silver	428	10	4	4	14
Latte	7530	10	18	25	32	Strawberry Red	186	2	100	82	6
Lavender	2573	36	52	0	0	Sunflower	136c	0	27	79	0
Lemon	127	0	4	60	0	Teal	3155	100	10	28	47
Light Blue	2708	3	4	9	0	Terracotta	159	1	74	100	7
Lilac	264	27	30	0	0	Turquoise	312	89	0	11	0
Lime	382	29	0	96	0	White	White	0	0	0	0
Magenta	Magenta c	0	100	0	0	Yellow	Yellow c	0	0	100	0

Fabric

Colours: 65% Polyester, 35% Cotton Twill, 195gsm

Denims: 70% Cotton Twill, 30% Polyester, 265gsm

Colours

Apple, Aqua, Aubergine, Black, Black Denim, Blue Denim, Bottle, Brown, Burgundy, Camel, Charcoal, Chestnut, Cornflower, Cyan, Dark Grey, Duck Egg Blue, Grey Denim, Emerald, Fuchsia, Hot Pink, Indigo Denim, Kelly Green, Khaki, Latte, Lavender, Lemon, Light Blue, Lilac, Lime, Magenta, Marine Blue, Mid Blue, Mocha, Mushroom, Mustard, Natural, Navy, Oasis Green, Olive, Orange, Peacock, Pink, Pistachio, Steel, Purple, Red, Raspberry Crush, Rich Violet, Royal, Sage, Salsa, Sapphire, Silver, Strawberry Red, Sunflower, Teal, Terracotta, Turquoise, White, Yellow

Sizes

One size

Features

- Classic Premier bib apron available in sixty colours
- Self fabric neck
- Self fabric ties 90cm long
- Width 72cm
- Length 86cm
- Sliding adjusting buckle

Country of Origin

China & Bangladesh

Carton Dimensions

41cm x 60cm x 24 cm

Carton Weight

10.80 kg approx.

VAT Code

6211 43 1000



INDUSTRIAL LAUNDERING 85°C MAXIMUM

Marketing Description

Our best-selling apron available is available in sixty colours. This full bib apron is part of the 'Colour's collection from Premier where the customers can be reassured of an exact pantone match across the range of garments.