

NS910  
Men's raw edge merino wool jumper



50% organic cotton and 50% RWS\* responsible Merino wool 7 gauge  
Straight fit Rolled edge neckline in main fabric Navy blue taped neck  
across all colourways 2x2 rib bottom hem and cuffs "Fully Fashion" knit  
\*Responsible Wool Standard

370 g/m<sup>2</sup>

Sizes

S - M - L - XL - XXL - 3XL

More information

Logistic

5 20

Country of origin

BD - Bangladesh

Customs code

61102099

Washing instructions

Colours

Deep Indigo Heather  
 Gravel Heather

Certifications

Made with 50% Organic materials.  
Certified by Ecocert Greenlife in accordance  
with the OCS standard available at  
<https://textileexchange.org/>  
EGL N°169851 / NATIVE SPIRIT

Made with 50% RWS Wool.  
Certified by Ecocert Greenlife in accordance  
with the RWS standard available at  
<https://textileexchange.org/>  
EGL N°169851 / NATIVE SPIRIT

NO LABEL

ORGANIC COTTON

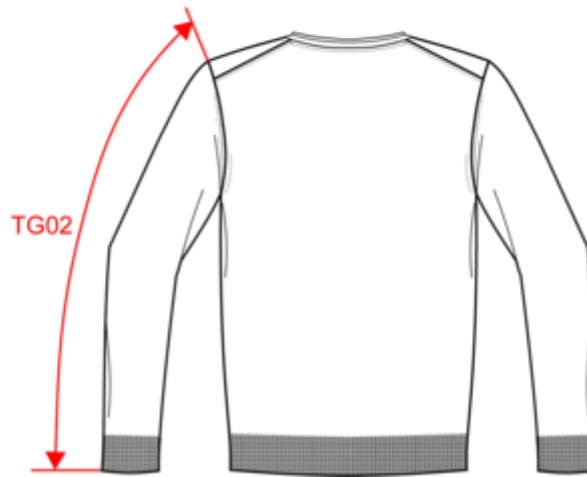
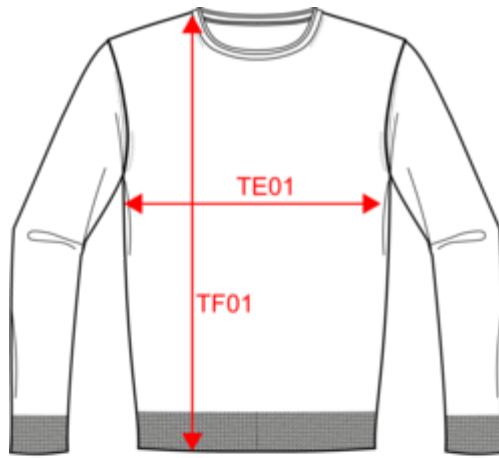
RESPONSIBLE MERINO WOOL

3 COLOURS

STANDARD 100  
CQ 1007/17  
BTM  
[www.oeko-tex.com](http://www.oeko-tex.com)

**NS910**  
Men's raw edge merino wool jumper

Dimensions (cm)



Measurements in cm	S	M	L	XL	XXL	3XL
TE01 - 1/2 chest width at 1.5cm below armhole	50.00	53.00	56.00	59.00	62.00	65.00
TF01 - Total height from HSP	69.00	71.00	73.00	75.00	77.00	79.00
TG02 - Long sleeve length	65.00	66.00	67.00	68.00	69.00	70.00

# NS910

## Men's raw edge merino wool jumper

### Colours information

**Deep Indigo Heather**

RVB :  
Pantone C : Based on 426C  
Pantone TCX : Based on 19-4218TCX

**Gravel Heather**

RVB :  
Pantone C : Based on 403C  
Pantone TCX : Based on 17-0205TCX

### Logistic



5



20

Sizes	Width (cm)	Height (cm)	Length (cm)	Net weight (kg)	Gross weight (kg)	Pieces/Box	Pieces/Bundle
S	40.00	38.00	60.00	7.89000	9.89000	20	5
M	40.00	38.00	60.00	8.56000	10.56000	20	5
L	40.00	38.00	60.00	9.26000	11.26000	20	5
XL	40.00	40.00	60.00	9.98000	11.98000	20	5
XXL	40.00	40.00	60.00	10.73000	12.73000	20	5
3XL	40.00	40.00	60.00	11.51000	13.51000	20	5