





**About**

- Comfortable and breathable towelling material.
- No label: 100% customisable for your brand.
- Made in Portugal.

Made in Portugal. 80 % organic cotton. 20 % post-consumer recycled polyester. Combed cotton. Towelling material. Straight fit. Chest pocket. Enzyme washed. Two-button placket. Inner taped neckline with herringbone. Side slits with inner herringbone trim. 1 x 1 rib cuffs. Half-circle in the back.

 210 g/m<sup>2</sup> 

**Sizes**

 XS S M L XL XXL 3XL

**More information**

**Logistic**

 5

**Country of origin**

 30



PT - Portugal

**Customs code**



61051000

**Colours**

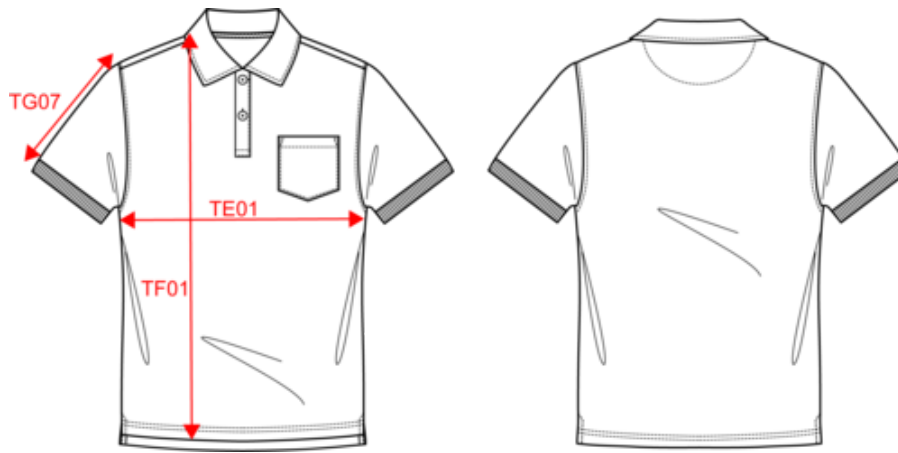


**Certifications**



**NS227**  
Eco-friendly men's Terry Towel polo shirt

**Dimensions (cm)**










Measurements in cm	XS	S	M	L	XL	XXL	3XL
TE01 - 1/2 chest width at 1.5cm below armhole	47.00	50.00	53.00	56.00	59.00	62.00	65.00
TF03 - Front total height from HSP	67.00	69.00	71.00	73.00	75.00	77.00	79.00
TG07 - Short sleeve length	20.75	21.50	22.25	23.00	23.75	24.50	25.25

# NS227

## Eco-friendly men's Terry Towel polo shirt

### Colours information

- 
**Almond Green**  
 RVB : 145,146,127  
 Pantone C : 7536C  
 Pantone TCX : 16-0213TCX
- 
**Brook Green**  
 RVB : 181,214,200  
 Pantone C : 559C  
 Pantone TCX : 12-5808TCX
- 
**Cream Coffee**  
 RVB : 152,131,112  
 Pantone C : 7504C  
 Pantone TCX : 17-1319TCX
- 
**Iron Grey**  
 RVB : 78,80,82  
 Pantone C : 446C  
 Pantone TCX : 19-3901TCX
- 
**Ivory**  
 RVB : 239,231,216  
 Pantone C : 482C  
 Pantone TCX : 11-0606TCX
- 
**Mineral Grey**  
 RVB : 94,104,116  
 Pantone C : 431C  
 Pantone TCX : 18-4215TCX
- 
**Paprika**  
 RVB : 188,66,58  
 Pantone C : 7620C  
 Pantone TCX : 18-1550TCX
- 
**Parma**  
 RVB : 184,182,210  
 Pantone C : 5295C  
 Pantone TCX : 14-3911TCX
- 
**Peacock Green**  
 RVB : 0,87,95  
 Pantone C : 7476C  
 Pantone TCX : 19-4916TCX

### Logistic



5



30

Sizes	Width (cm)	Height (cm)	Length (cm)	Net weight (kg)	Gross weight (kg)	Pieces/Box	Pieces/Bundle
XS	40.00000	0.00000	60.00000	0.00000	0.00000	30	5
S	40.00000	40.00000	60.00000	5.83000	7.23000	30	5
M	40.00000	40.00000	60.00000	6.04000	7.44000	30	5
L	40.00000	40.00000	60.00000	6.28000	7.68000	30	5
XL	40.00000	40.00000	60.00000	6.82000	8.22000	30	5
XXL	40.00000	40.00000	60.00000	7.21000	8.61000	30	5
3XL	40.00000	40.00000	60.00000	7.72000	9.12000	30	5