

# ROYAL LINE

## B&C QUEEN Zipped Hood\_° WW03Q



The **Environment friendly** and luxurious Zipped Hood for women thanks to exceptional softness, modern style and supreme printability offering 10 awesome colours and a wide range of sizes. The premium Zipped Hood for women at its best.

10 COLOURS

VISIBLELY MORE PRINTABLE  
ROYAL  
PST  
OUTER 100% COTTON



### SWEATSHIRT - BRUSHED FLEECE INSIDE

80% pre-shrunk ring-spun more sustainable Cotton, **combed** - 20% Polyester  
280 g/m<sup>2</sup> | XS - S - M - L - XL - 2XL - 3XL\*  
5 pcs/pack & 30 pcs/carton

\* Only available in Black Pure, Navy Blue, Heather Grey, Asphalt, Royal, Red, White

### inspired tomorrow\_°



By choosing our B&C Royal line cotton products, you're supporting our investment in Better Cotton's mission. For more information on better cotton and its fantastic mission please visit [bettercotton.org](http://bettercotton.org)

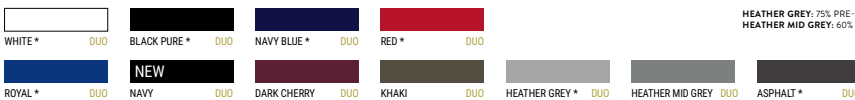
THIS PRODUCT IS SOURCED VIA A SYSTEM OF MASS BALANCE AND THEREFORE MAY NOT CONTAIN BETTER COTTON



Want the same style for men?  
Try the B&C KING Zipped Hood\_°



DUO♂  
CONCEPT



HEATHER GREY: 75% PRE-SHRUNK RING-SPUN MORE SUSTAINABLE COTTON, COMBED - 21% POLYESTER - 4% VISCOSE  
HEATHER MID GREY: 60% PRE-SHRUNK RING-SPUN MORE SUSTAINABLE COTTON, COMBED - 40% POLYESTER

### Style

- Elegant, luxurious, comfortable & **Environment friendly** Hooded sweatshirt
- Side seamed style ensures the best fit and a feminine silhouette
- Identical colours (10) for men and women for a perfect duo
- 7 sizes - XS to 3XL
- Single Jersey lined hood for extra durability and perfect appearance
- Flat laced drawstings with luxurious metal tips
- Qualitative long-lasting necktape
- Covered metal zip
- Single Jersey halfmoon in the back for premium look and extra durability

### Quality / Handfeel

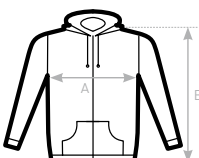
- Made of 80% pre-shrunk ring-spun sustainable Cotton, combed - 20% Polyester
- STANDARD100 by OEKO-TEX® certification for the best comfort of your skin
- Ultrasoft peached feel 100% cotton-faced fabric with ultimate printing surface
- Brushed inside for a perfect warm and cosy premium feel
- Truly durable and ultra-comfortable thanks to B&C PST technology and its polyester filament

### Printability / Decoration

- Ultimate printing surface thanks to its ultrasoft 100% combed cotton-faced fabric (B&C PST technology)
- Very smooth, soft and even surface for perfect printing results
- Tested and approved for all printing techniques applicable on cotton
- Folded in box to ease the decoration process

### Labels

- Retail like labeling
- Ultrasoft double satin label
- Qualitative Gold and Black print design
- Straightforward size identification
- Labels are following the mandatory EU regulation



B&C QUEEN ZIPPED HOOD_° WW03Q	XS	S	M	L	XL	2XL	3XL	4XL
A HALF CHEST	46,5	49	52	55	58	61,5	65	-
B BODY LENGTH	62	64	66	68	69	70	71	-

inspired tomorrow\_°