

# B&C DNM Plug In /men - TM D70



## MEDIUM FIT

Ultimate look short-sleeved T-shirt in Single Jersey with cold dye treatment for an eye-catching effect (pigment dye)

- Short-sleeved T-shirt
- Crew neck self fabric collar
- Necktape
- Set-in sleeves
- Sleeve finish: folded with bartacks reinforcing dye effect
- Bottom hemd with blind stitching
- Reinforced dye effect on seams (collar, cuffs, bottom hem)
- Twisted side seams reinforcing dye effect



100% pre-shrunk ring-spun cotton

Single Jersey

145 g/m<sup>2</sup>

S - M - L - XL - 2XL

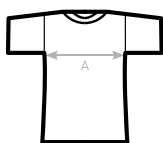
5 pcs/pack & 25 pcs/carton



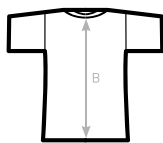
The characteristics of the treatments make each garment original and unique. Variations should be considered as a sign of quality.



**DU♂  
CONCEPT**  
with B&C DNM Plug In /women



FRONT



BACK

### SIZES [CM]

B&C DNM PLUG IN /M. TM D70	S	M	L	XL	2XL	3XL
A HALF CHEST	47	50	53	56	59	-
B CENTER BACK LENGTH	66	68	70	72	74	-



Tested for harmful substances.  
www.oeko-tex.com/standard100