

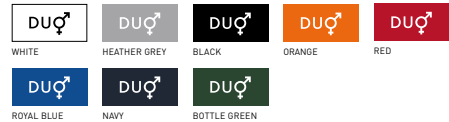
B&C ID.001 LSL - PU 112

Basic by B&C - The 100% cotton piqué long-sleeved polo shirt is designed and engineered to offer the right style at the right price for large quantities.



REGULAR FIT

- 1x1 rib knitted collar
- Necktape for better shape retention
- 2-button placket reinforced with fusible interlining
- Side seams for perfect fit
- Wide range of sizes to fit everyone: XS-4XL
- Cotton piqué made to be decorated
- Matching coloured buttons for better flexibility when printing/decorating
- The fabric has been tested and approved for all standard printing techniques



100% pre-shrunk ring-spun cotton
HEATHER GREY: 90% PRE-SHRUNK RING-SPUN COTTON - 10% VISCOSE

Piqué

180 g/m²

XS - S - M - L - XL - 2XL - 3XL - 4XL

10 pcs/pack & 50 pcs/carton

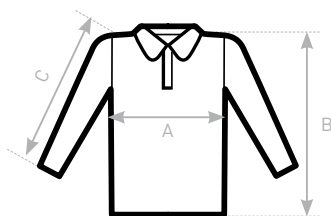


DUO
CONCEPT

with B&C ID.001 LSL /women

You like the B&C ID.001 LSL but want it in short sleeves? Try the:

* B&C ID.001 - same fabric but in short-sleeves



SIZES [CM]

B&C ID.001 LSL PU 112	XS	S	M	L	XL	2XL	3XL	4XL
A HALF CHEST	45,5	49	52,5	56	59,5	63	66,5	70
B BODY LENGTH FROM NECK POINT	67	69,5	72	74,5	77	79,5	82	84,5
C SLEEVE LENGTH	63	64	65	66	67	68	69	70

OEKO-TEX®
CONFIDENCE IN TEXTILES
STANDARD 100
1501003 Certexbel
Tested for harmful substances.
www.oeko-tex.com/standard100